

## COMPACT LAMINATE HIGH PRESSURE LAMINATE



## Compact Grade Laminate - A world of colour and choice...

...Compact Grade Laminate (CGL) conforms to BS EN 438 and is an immensely strong range of solid panels that can withstand high impact environments.

### CGL is suitable for:

Hospitals, Laboratories, Nurseries and Schools, Pools & Saunas, Airports, Train stations, Kitchens, Bathrooms & Washrooms, Store fitting and Fitting Rooms.

### CGL technical specifications include:

- Non-porous surface
- Resistance to stain
- Easy to clean
- Resistance to chemicals
- Resistance to shock
- Resistance to scratching
- Exceptional resistance to moisture
- Exceptional resistance to impact
- Colour stability
- Durability.

The diverse range of plain colours, woodgrains and fantasy designs, is complemented by colour matched ranges of the same decors and textures in High Pressure Laminate (HPL). Allowing both products to be combined on the same project without any visual difference. In addition the attractive black edge of CGL can be machined to your choice of profile.

### Technical Information

#### Precision Cutting

This involves cutting pieces of an exact size from the original sheet, without chipping the edges of the decorative surface. Depending on the requirement, precision cutting includes:

- Cutting before the precision cutting, followed by adjustment.
- Precision cutting (or finishing) directly with a saw.

#### General Cutting

This process uses an electric circular saw:

- a vertical or horizontal table
- one or many cutting heads: fixed or mobile, situated on or below the table.

#### Conditioning

Before fabricating, our products must be stored in the following ambient conditions for approximately 10 days:

- Temperature: 18 to 22°C.
- Relative humidity: 40 to 60%

It is strongly recommended that a stabilising period of approximately 10 days be observed before proceeding with any fabrication. Do not store filmed sheets beyond 6 months. After use it is essential that the protective film is removed within a maximum of 2 months.

#### Relative Humidity

Once the boards have been fabricated, the two faces should be ventilated and stored in the same ambient temperature and relative humidity conditions. This principle must be adhered to in the case of wall panelling in particular. Never leave a composite board or sheet of Compact with protective film on only one face.

### Cleaning & Maintenance

Our range of decorative panels and fascias are designed to withstand the regular cleaning regimes that are essential to washroom maintenance and hygiene. These products are easy to keep clean and in most cases, wiping down the panel with warm water and a mild cleaning agent is adequate. In high usage environments, CGL and HPL can be cleaned with aggressive disinfectants and a pressure washer if necessary. Graffiti can be cleaned off using the standard organic solvents (e.g. acetone) without any effect on the panel colour. Should it be necessary, these panels can be cleaned with non-abrasive cleaning materials and disinfectants although in most cases warm water and a mild detergent will keep the panels clean and hygienic. When cleaning ABS edging, avoid solvents or highly alcoholic cleaning agents.

### Transport & Storage

When handling, avoid dragging the decorative faces against one another. Lift the sheets either by hand or with the aid of suction pads. During all handling, ensure that the sheets do not rub against one another, and avoid impact, scratches, dirt, foreign bodies and contact with water or other liquids. Transport the sheets on pallets of sufficient size and rigidity. To avoid excessive distortion and facilitate subsequent conditioning, the sheets must be stored in dry premises, under cover. The climate conditions must be 10 to 30°C, with 40 to 60% relative humidity. Avoid storing in proximity to a source of heat for extended periods. The sheets should preferably be stored flat, in piles or racks.

L2446 Lemon Green



F3814 Flower Art Black

F356 Black Cocktail

**Arnold Laver**

**SONAE  
INDUSTRIA**

**REHAU**  
Unlimited Polymer Solutions

Dealer Stamp

February 2013

# COMPACT LAMINATE HIGH PRESSURE LAMINATE



B4062 Pearl White



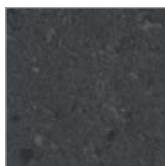
F10051 Blue Berry Speckle



F212 Jade Speckle



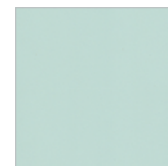
F351 Playa Grey



F353 Ceramic Anthracite



L2208 Spearmint



L2209 Eucalyptus



L2210 Caribe



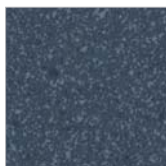
L2211 Purple Cassis



L2446 Lemon Green



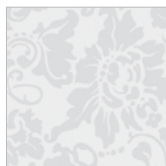
F356 Black Cocktail



F357 Playa Blue



F3814 Flower Art Black



F3818 Flower Art White



F4118 Lilac Speckle



L3191 Vanilla



L3540 Red Ruby



L3546 Indigo Blue



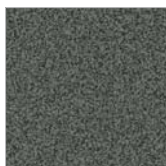
L3572 Royal Blue



L4060 Quartz



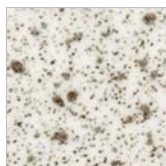
F4159 Aluminium Brushed



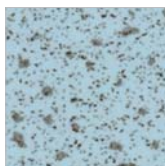
F939 Venezia



F06058 Melody



FES000 White Speckle



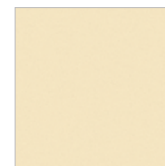
F51194 Blue Iris Speckle



L4063 Smoke Grey



L4085 Green Mint



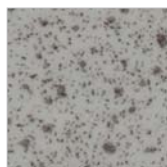
L4087 Caramel



L4094 Green Marine



L4115 Stone Grey



F54063 Grey Speckle



L002 Light Grey



L10051 Blue Berry



L101 Red



L167 Dark Grey



L4116 Red Coquelicot



L4118 Lilac



L4136 Yellow Crisp



L4149 Natural Cream



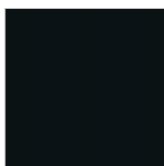
L06002 Galet Grey



L1194 Blue Iris



L122 Orange



L3031 Black



L1304 Blue Tiber



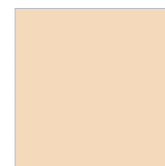
L1828 Blue Paradiso



L6063 Citrus Yellow



LE1732 Icy Blue



LE301 Sable/Sand



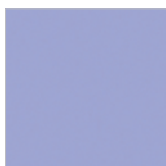
M760 Nettgau Cherry



M1076 Wenge  
Mozambique



L2065 Yellow Marigold



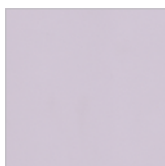
L2069 Blue Parme



L212 Jade



L2206 Rose Salsa



L2207 Rose Mystic



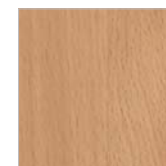
M2440 Maple Polar



M3817 Oak Classic



M4394 Walnut Macadamia



M522 Beech Loire



M6047 Smoke Tamarak